

Ashland/Bayfield County Seminar

Diseases of Vegetables

Brian D. Hudelson

Department of Plant Pathology
University of Wisconsin-Madison/Extension



Diseases of Vegetables Tomato Leaf Blights

- **Causes**
 - Septoria lycopersici (Septoria leaf spot)
 - Alternaria solani (early blight)
 - Phytophthora infestans (late blight)
- **Hosts**
 - Tomato
 - Potato (early blight, late blight)
- **Environmental trigger**
 - Long periods of leaf wetness



Diseases of Vegetables Tomato Leaf Blights

- **Control (early blight, Septoria leaf spot)**
 - Remove and destroy infested debris
 - Move tomatoes to new location (?)
 - Plant resistant varieties (?)
 - Space plants far apart
 - Mulch around the base of plants
 - DO NOT over-mulch

Diseases of Vegetables Tomato Leaf Blights

- **Control (early blight, Septoria leaf spot)**
 - DO NOT overhead water
 - Remove infected leaf tissue (?)
 - Use fungicides to prevent infections
 - Copper, neem oil
 - Applications every 7-14 days

Diseases of Vegetables Tomato Leaf Blights

- **Control (late blight)**
 - Remove and destroy
 - Infected plants, fruits, tubers
 - Volunteer tomato and potato plants
 - Weed hosts
 - **DO NOT** use last year's potatoes as seed potatoes
 - **DO** use certified seed potatoes

Diseases of Vegetables Tomato Leaf Blights

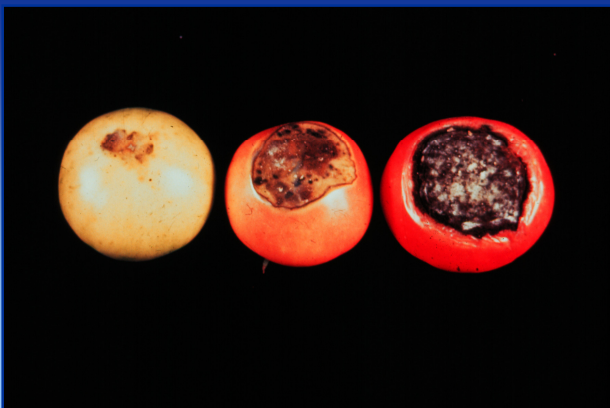
- **Control (late blight)**
 - Grow resistant tomato varieties
 - **Excellent**
 - 'Mountain Magic', 'Plum Regal', 'Mountain Merit', 'Defiant', 'Iron Lady', 'Matt's Wild Cherry', 'Yellow Currant', 'Yellow Pear', 'Black Plum'
 - **Good**
 - 'Red Currant', 'Aunt Ginny's Purple', 'Big Rainbow', 'Tigerella'

Diseases of Vegetables Tomato Leaf Blights

- **Control (late blight)**
 - Grow resistant tomato varieties
 - **Moderate**
 - 'Juliet', 'Red Pearl', 'Aunt Ruby's German Green', 'Black Krim', 'Sun Sugar', 'Wapsipinicon', 'Wisconsin 55', 'Pruden's Purple', 'Slava', and 'Stupice'
 - Use fungicides to prevent infections
 - Copper
 - Applications every 7-14 days

Diseases of Vegetables Blossom End Rot

- **Cause: Calcium deficiency**
- **Hosts**
 - Tomato
 - Pepper
 - Eggplant
 - Cucurbits (cucumber, squash, pumpkin)
- **Environmental trigger: Drought**



Diseases of Vegetables Blossom End Rot

- **Management**
 - Test soil to determine calcium level
 - Add calcium as needed
 - Bone meal
 - Egg shells
 - Water plants adequately

Diseases of Vegetables Powdery Mildew

- **Causes**
 - *Sphaerotheca fuliginea*
 - *Erysiphe cichoracearum*
 - *Oidium* spp.
- **Hosts**
 - Cucurbits (cucumber, squash pumpkin)
 - Other vegetables
- **Environmental trigger: High humidity**



Diseases of Vegetables Powdery Mildew

- **Control**
 - Plant resistant varieties
 - DO NOT crowd plants
 - Thin vines
 - Apply fungicides for control
 - Elemental sulfur
 - 1.5 Tbsp baking soda + 3 Tbsp light-weight horticultural oil in 1 gal water
 - Applications every 7-14 days

Diseases of Vegetables Aster Yellows

- **Cause: Aster yellows phytoplasma**
- **Hosts**
 - Carrot
 - Potato
 - Other vegetables
- **Environmental trigger**
 - High aster leafhopper populations



Diseases of Vegetables Aster Yellows

- **Control**
 - Control leafhoppers (?)
 - Remove infected plants

Diseases of Vegetables Herbicide Injury

- **Causes**
 - Growth regulator herbicides
 - 2,4-D
 - Dicamba
 - Other herbicides
- **Affected plants**
 - All vegetables
 - Particularly tomato



Diseases of Vegetables Herbicide Injury

- **Control**
 - DO NOT use herbicides
 - If you or your neighbors do use herbicides, make sure that you or they
 - Follow application directions exactly
 - Apply herbicides at low wind speeds (< 5 mph)
 - DO NOT apply herbicides too close to sensitive plants
 - Apply herbicides at low pressure
 - Use amine rather than ester forms of herbicides

Diseases of Vegetables Common Smut

- **Cause:** Ustilago maydis
- **Host:** Corn
- **Environmental trigger**
 - Hail (for leaf and stalk infections)

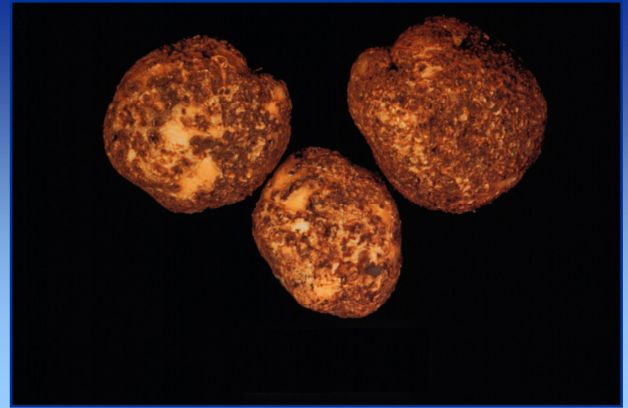


Diseases of Vegetables Common Smut

- **Control**
 - Plant resistant varieties
 - Reduce physical damage to corn plants
 - Give up on your corn and eat the smut

Diseases of Vegetables **Scab**

- Cause: Streptomyces scabies
- Host
 - Potato
 - Other root crops (carrot, radish, turnip)
- Environmental trigger: High soil pH

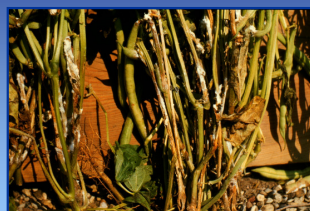
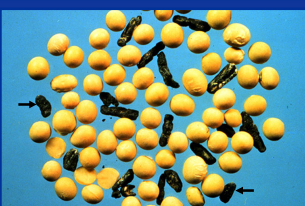


Diseases of Vegetables **Scab**

- Control
 - Plant scab-free potato stock
 - Routinely rotate crops to avoid build-up of the pathogen
 - Avoid planting potatoes in infested areas
 - Plant non-hosts in infested areas
 - Move potatoes to another location
 - Plant scab resistant varieties
 - Lower soil pH

Diseases of Vegetables **White Mold**

- Cause: Sclerotinia sclerotiorum
- Host
 - Snap beans
 - Other vegetables
 - Sunflower
- Environmental trigger
 - Cool, wet weather



Diseases of Vegetables **White Mold**

- Control
 - Buy high quality seed
 - Routinely rotate crops to avoid build-up of the pathogens
 - Avoid planting susceptible vegetables in infested areas (5-7 yrs)
 - Plant non-hosts in infested areas
 - Control broad-leaf weeds
 - Plant beans with wider row spacings

Diseases of Vegetables White Mold

- **Control**
 - DO NOT over-water
 - DO NOT over-mulch
 - DO NOT over-fertilize
 - Remove symptomatic plants immediately
 - Use biological control products
 - Coniothyrium minitans
 - Parasitizes sclerotia

Diseases of Vegetables Cucumber Mosaic

- **Cause:** Cucumber mosaic virus
- **Hosts**
 - Cucurbits
 - Pepper
 - Tomato
- **Environmental trigger**
 - High aphid populations



Diseases of Vegetables Cucumber Mosaic

- **Control**
 - Plant resistant/tolerant varieties
 - Plant based resistance
 - Plant based tolerance
 - Genetically modified plants
 - Attempt to control aphid vectors (?)
 - Attempt to eliminate alternate hosts (?)

Diseases of Vegetables Damping-Off/Seedling Blights

- **Causes**
 - Pythium spp.
 - Rhizoctonia solani
 - Fusarium spp.
 - Other fungi and water molds
- **Hosts:** Any vegetable seedling
- **Environmental trigger:** Cool, wet soils



Diseases of Vegetables **Damping-Off/Seedling Blights**

- **Control**
 - Use a pasteurized soil mixture
 - Use decontaminated pots, working surfaces and tools
 - Moderate soil moisture
 - Use a soil with adequate drainage
 - DO NOT over-water

Diseases of Vegetables **Damping-Off/Seedling Blights**

- **Control**
 - Germinate seeds at higher temperatures
 - Use biological control products to protect seedlings
 - Trichoderma spp., Gliocladium spp.,
Streptomyces spp., Pseudomonas spp.,
Bacillus spp.
 - Applied as a seed treatment or soil treatment

Diseases of Vegetables **Where to Go for Help**

Plant Disease Diagnostics Clinic
Department of Plant Pathology
University of Wisconsin-Madison
1630 Linden Drive
Madison, WI 53706-1598
(608) 262-2863
pddc@plantpath.wisc.edu
<http://pddc.wisc.edu>
Follow the clinic on Twitter @UWPDDC