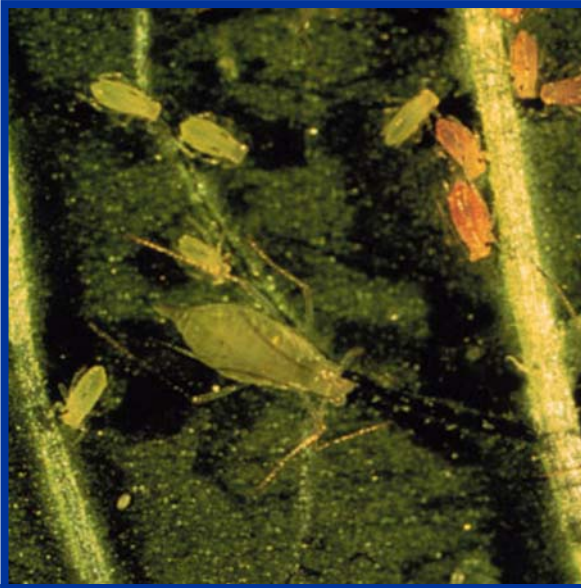


Aphids

Karen Delahaut, UW-Madison Fresh Market Vegetable Program

Aphids are soft-bodied, sucking insects that are sometimes called plant lice. They feed on plant sap and subsequently excrete a sugary substance (called honeydew) that can attract ants as well as support the growth of a saprophytic fungus called sooty mold. There are several species of aphids (all of which belong to the insect family Aphididae) that are capable of attacking any type of vegetation. Host plants for some aphids can be identified by a particular aphid's common name. The aphids that pose the most serious problem to Wisconsin vegetable production include the green peach, melon, potato and soybean aphids.



Green peach aphids.

Appearance: All aphids are soft-bodied and pear-shaped with a pair of cornicles (tailpipe-like structures) projecting from the rear end of their abdomen. Adult aphids may or may not be winged. Some of the more common species, along with their descriptions are listed in the table below.

Symptoms and Effects: Reduced plant vigor, stunting, and deformation of plant parts are common symptoms of aphid infestations. In some cases, the presence of honeydew or sooty mold is the primary indication of an aphid outbreak. In addition, aphids are excellent vectors of several virus diseases such as a group of mosaic viruses that infect a wide host range. In some cases, the appearance of virus symptoms indicates that aphids are present.

Life Cycle: Generalizing the life cycle of all aphids is difficult because of the diversity of their life habits ranging from single to multiple hosts. One of the unique characteristics of aphids that sets them apart from all other insects is their ability to bear live young. Aphids overwinter as eggs on a perennial host. In spring, the eggs hatch and the aphids

migrate onto their summer host when available. These female aphids can reproduce without mating and hold eggs in their bodies to give birth to live young. By eliminating mating and egg-laying, aphids have shortened their life cycle and increased their reproductive capability. Throughout the summer, wingless females predominate, but winged forms may arise when populations become too large for the available food source. In late summer, in response to the shortened day length, wingless females and males are produced for the purpose of mating and laying of fertilized eggs that will survive adverse winter conditions.

Scouting Suggestions: Look for "hot spots" of aphid activity scattered throughout the field. Because of the spotty nature of infestations, a number of plants in several areas should be examined for aphids. Examine the terminals of 15 consecutive plants (or other sample unit) and rate the plants as infested or uninfested. Given the huge reproductive potential of aphids, an infestation level of 5 to 10% would indicate a potentially damaging infestation. Repeat checks at weekly intervals to determine the need to treat.

Control

Cultural: Predators such as ladybird beetle adults and larvae, green lacewing larvae, syrphid fly larvae, and several parasitic wasps all help reduce aphid numbers when insecticides are not used. Heavy rains help dislodge aphids from the plant and, during periods of high humidity, fungal diseases may greatly reduce populations. The remarkable reproductive capacity of the aphid normally overcomes the effects of natural controls in spring when cool temperatures hinder the development of natural enemies. These natural controls are most effective in the warmer weather of summer and fall.

Chemical: Treat with an insecticide when threshold levels have been reached. Refer to UWEX publication A3422 "Commercial Vegetable Production in Wisconsin" for a list of recommended products.

University of Wisconsin Garden Facts



Keep in mind however, that green peach and melon aphids have shown resistance to several insecticides. In particular, resistance to organophosphate insecticides has been reported.

Common Name	Scientific Name	Description	Host Plant(s)
Bean aphid	<u><i>Aphis fabae</i></u>	Dark green to sooty black	artichoke, asparagus, bean, carrot, corn, lettuce, parsnip, rhubarb, spinach, squash. Overwinters on <u><i>Euonymus</i></u> and <u><i>Viburnum</i></u> spp.
Cabbage aphid	<u><i>Brevicoryne brassicae</i></u>	gray-green with a powdery, waxy covering	broccoli, Brussels sprouts, cabbage, collards, kale, kohlrabi, and radish. Overwinters as eggs on host plants.
Corn leaf aphid	<u><i>Rhopalosiphum maidis</i></u>	bluish-green	corn. Does not overwinter in Wisconsin; migrates from the south.
Green peach aphid	<u><i>Myzus persicae</i></u>	yellowish-green with three dark lines on their back	beet, celery, cole crops, cucurbits, lettuce, pepper, potato, spinach, tomato. Overwinters on cherry and peach
Melon aphid	<u><i>Aphis gossypii</i></u>	pale yellow to brown or nearly black with black cornicles	asparagus, bean, beet, celery, cucurbits, okra, spinach. Overwinters on many plants.
Pea aphid	<u><i>Acyrtosiphon pisum</i></u>	pale green with black legs	peas. Overwinters on alfalfa.
Potato aphid	<u><i>Macrosiphum euphorbiae</i></u>	pink or green	asparagus, bean, corn, cucurbits, eggplant, lettuce, pepper, potato, sweet potato, tomato. Overwinters on rose.
Soybean aphid	<u><i>Aphis glycines</i></u>	light yellow	cucurbits, beans. Overwinters on buckthorn

For more information on aphids: See UW-Extension Bulletin A3422, or contact your county Extension agent.

© 1999 by the Board of Regents of the University of Wisconsin System doing business as the division of Cooperative Extension of the University of Wisconsin Extension. An EEO/Affirmative Action employer, University of Wisconsin Extension provides equal opportunities in employment and programming, including Title IX and ADA requirements. This document can be provided in an alternative format by calling Brian Hudelson at (608) 262-2863 (711 for Wisconsin Relay).

References to pesticide products in this publication are for your convenience and are not an endorsement or criticism of one product over similar products. You are responsible for using pesticides according to the manufacturer's current label directions. Follow directions exactly to protect the environment and people from pesticide exposure. Failure to do so violates the law.

Thanks to Jeff Wyman and Phil Pellitteri for reviewing this document.

A complete inventory of University of Wisconsin Garden Facts is available at the University of Wisconsin-Extension Horticulture website: whort.uwex.edu.