

SAPS 2014

## Cool Diseases in the PDDC:

*Dr. Death's Favorites  
from a 15+ Year Diagnostic Career*

**Brian D. Hudelson**

**Department of Plant Pathology  
University of Wisconsin-Madison/Extension**



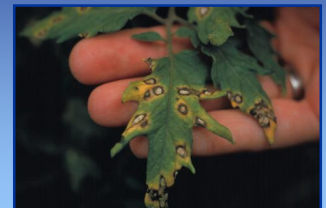
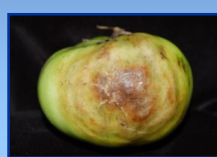
## Cool Diseases in the PDDC Powdery Mildews



## Cool Diseases in the PDDC Downy Mildews



## Cool Diseases in the PDDC Tomato Blights



## Cool Diseases in the PDDC Rhizosphaera Needle Cast



## Cool Diseases in the PDDC Black Knot



*Cool Diseases in the PDDC*  
**"Cedar-Apple" Rusts**



*Cool Diseases in the PDDC*  
**Brown Rot**



<http://www.oakleafgarden.com/problems/brownrot-morinda-fusigina-andmonilia.htm>

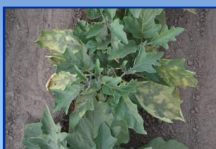
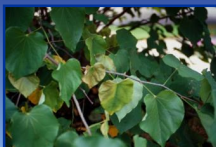
*Cool Diseases in the PDDC*  
**Plum Pockets**



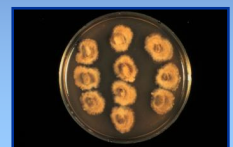
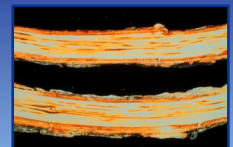
*Cool Diseases in the PDDC*  
**Tar Spot**



*Cool Diseases in the PDDC*  
**Verticillium Wilt**



*Cool Diseases in the PDDC*  
**Oak Wilt**



*Cool Diseases in the PDDC*  
**Armillaria Root Disease**



*Cool Diseases in the PDDC*  
**Southern Blight**



*Cool Diseases in the PDDC*  
**White Mold**



*Cool Diseases in the PDDC*  
**Common Corn Smut**



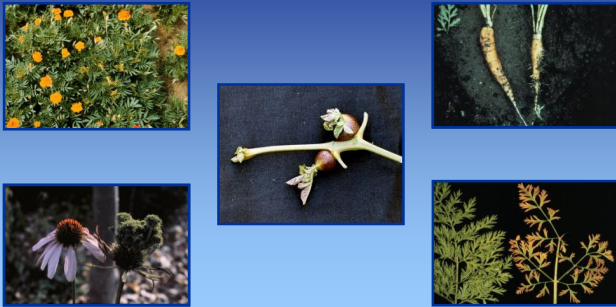
*Cool Diseases in the PDDC*  
**Ralstonia Wilt**



*Cool Diseases in the PDDC*  
**Black Rot**



### Cool Diseases in the PDDC Aster Yellows



### Cool Diseases in the PDDC Viral Diseases



### Cool Diseases in the PDDC Foliar Nematode



### Cool Diseases in the PDDC Abiotic Disorders



### Cool Diseases in the PDDC Abiotic Disorders



### Cool Diseases in the PDDC Non-Diseases: Fungi/Fungi Allies



***Cool Diseases in the PDDC***  
***Non-Diseases: Insects***



*Maple Eyespot Gall*



*Spindle Galls*



*Broad Mite Injury*



*Velvet Gall*

***Cool Diseases in the PDDC***  
***Where to Go for Help***

***Plant Disease Diagnostics Clinic***  
***Department of Plant Pathology***  
***University of Wisconsin-Madison***  
***1630 Linden Drive***  
***Madison, WI 53706-1598***  
***(608) 262-2863***  
***[pddc@plantpath.wisc.edu](mailto:pddc@plantpath.wisc.edu)***  
***<http://pddc.wisc.edu>***  
***Follow the clinic on Twitter @UWPDDC***