

*Woman's Club of Wisconsin*

***Diseases in the Garden***  
*(and their Management)*

**Brian D. Hudelson**

**Department of Plant Pathology**

**University of Wisconsin-Madison/Extension**



***Diseases in the Garden***  
***Powdery Mildews***



***Diseases in the Garden***  
***Downy Mildews***



***Diseases in the Garden***  
***Viral Diseases***



***Diseases in the Garden***  
***Foliar Nematode***



***Diseases in the Garden***  
***Southern Blight***



*Diseases in the Garden*  
**White Mold**



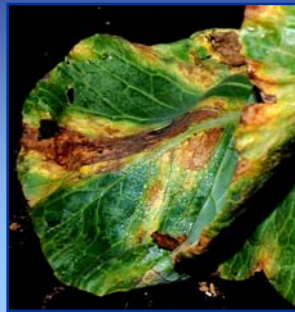
*Diseases in the Garden*  
**Aster Yellows**



*Diseases in the Garden*  
**Tomato Blights**



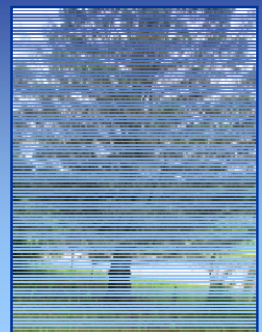
*Diseases in the Garden*  
**Black Rot**



*Diseases in the Garden*  
**Common Corn Smut**



*Diseases in the Garden*  
**Rhizosphaera Needle Cast**



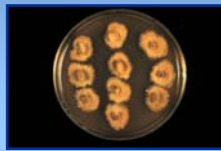
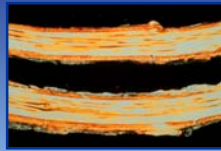
*Diseases in the Garden*  
**Tar Spot**



*Diseases in the Garden*  
**Verticillium Wilt**



*Diseases in the Garden*  
**Oak Wilt**



*Diseases in the Garden*  
**Black Knot**



*Diseases in the Garden*  
**Apple Scab**



*Diseases in the Garden*  
**"Cedar-Apple" Rusts**



**Diseases in the Garden  
Brown Rot**



<http://www.suburbanliving.com/problems/brown-rot-monilia-fragariae-and-monilia-tata>

**Diseases in the Garden  
Plum Pockets**



**Diseases in the Garden  
Abiotic Disorders**



*Chlorosis*



*Imprecis Injury*



*Salt Damage*



*Blossom End Rot*



*2,4-D Injury*



*Urine Damage*

**Diseases in the Garden  
Abiotic Disorders**



*Cold Injury*



*Drought Stress*



*Improper Planting*



*Heat Injury*



*Winter Injury*

**Diseases in the Garden  
Non-Diseases: Fungi/Fungi Allies**



*Giant Puffballs*



*Lichens*



*Stink Horns*



*Bird's Nest Fungi*



*Slime Mold*

**Diseases in the Garden  
Non-Diseases: Insects**



*Maple Eyespot Gall*



*Spindle Galls*



*Broad Mite Injury*



*Velvet Gall*

### *Diseases in the Garden Control*

- *Select the right plant for the right place*
  - *Hardiness*
  - *Environmental requirements*
  - *Alternate hosts*
  - *Disease resistance*
- *Select healthy plants*
  - *Transplants*
  - *Seeds*

### *Diseases in the Garden Control*

- *Diversify and rotate*
- *Plant properly*
- *Mulch properly*
  - *Type*
  - *Amount*
- *Fertilize properly*
  - *Amount*
  - *Timing*

### *Diseases in the Garden Control*

- *Water properly*
  - *Source*
  - *Amount*
  - *Delivery method*
- *Prune and thin routinely*
- *Control weeds*

### *Diseases in the Garden Control*

- *Clean up in the autumn*
  - *Burn*
  - *Bury*
  - *Compost*
- *Decontaminate gardening materials*
  - *Pruning tools*
  - *Pots and working surfaces*
  - *Soil*

### *Diseases in the Garden Control*

- *Fungicides/bactericides are a last resort*
  - *Chemical*
  - *Biological*

### *Diseases in the Garden Where to Go for Help*

*Plant Disease Diagnostics Clinic  
Department of Plant Pathology  
University of Wisconsin-Madison  
1630 Linden Drive  
Madison, WI 53706-1598  
(608) 262-2863  
pddc@plantpath.wisc.edu  
<http://pddc.wisc.edu>  
Follow the clinic on Twitter @UWPDDC*