

2016 Urban Forestry Workshop

Identifying and Managing Tree and Shrub Diseases

Brian D. Hudelson

Department of Plant Pathology

University of Wisconsin-Madison/Extension



Tree and Shrub Diseases Fungal Leaf Diseases



Tree and Shrub Diseases Rhizosphaera Needle Cast



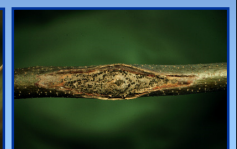
Tree and Shrub Diseases Powdery Mildews



Tree and Shrub Diseases "Cedar-Apple" Rusts



Tree and Shrub Diseases Canker Diseases



Tree and Shrub Diseases
Black Knot



Tree and Shrub Diseases
Verticillium Wilt



Tree and Shrub Diseases
Dutch Elm Disease



Tree and Shrub Diseases
Oak Wilt



Tree and Shrub Diseases
Armillaria Root Disease



Tree and Shrub Diseases
Chlorosis



Tree and Shrub Diseases
New Diseases on the Horizon



Tree and Shrub Diseases
How to Contact the PDDC

*Plant Disease Diagnostics Clinic
Department of Plant Pathology
University of Wisconsin-Madison
1630 Linden Drive
Madison, WI 53706-1598
(608) 262-2863
pddc@plantpath.wisc.edu
<http://pddc.wisc.edu>
Follow on Twitter @UWPDDC*