

New Woody Plants for 2014



Dr. Laura G. Jull
Dept. of Horticulture
University of Wisconsin-Madison

Where do new plants come from?

- ◆ **New plant resulting from:**
 - ✓ Traditional breeding efforts: hybrids
 - ✓ Genetic mutation during propagation process (natural) or induced by humans (GMO's)
 - ✓ Bud sport on a plant growing in production
 - ✓ Stable chimera (plant now variegated)
 - ✓ Random chance discovery

Where do new plants come from?

- ◆ **Nurseries, both large and small**
 - ✓ J. Frank Schmidt & Son
 - ✓ Bailey Nurseries
 - ✓ Monrovia
 - ✓ Spring Meadow Nursery
 - ✓ Iseli Nursery
 - ✓ Ball Horticultural Co.
 - ✓ Johnson's Nursery
- ◆ **Plant Explorers: collect in the wild**
- ◆ **University Research Scientists/Breeders**
- ◆ **Professional Breeders**
- ◆ **Botanical Gardens and Arboreta**
- ◆ **Home Gardeners and Hobbyists**

Where do new plants come from?

- ◆ **Marketing firms affiliated with large nurseries**
 - ✓ Proven Winners® Color Choice® Shrubs: Spring Meadow Nursery
 - ✓ First Editions®: Bailey Nurseries
 - ✓ Garden Debut®: Greenleaf Nurseries
 - ✓ Star® Roses and Plants: Conard Pyle Nursery
 - ✓ Newflora™ LLC and Kordes® Roses



New Trees

Acer 'IsIAJ': Artic Jade® maple

- Introduced Iseli Nursery, Boring, OR
- Hardy to zone 4b
- Hybrid maple of *Acer pseudosieboldianum* (Korean maple) and *Acer palmatum* (Japanese maple)
- Member of Jack Frost® Series of hybrid maples
- Large, deeply cut, green leaves resemble cutleaf full moon maple
- Good branching
- Orange and reddish fall color



Acer 'IsIAJ': Artic Jade® maple

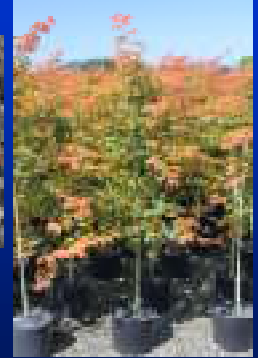
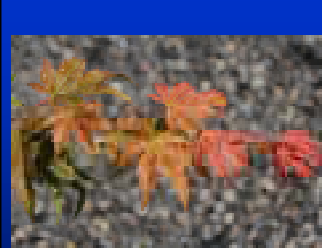


Acer 'IsINW': North Wind® maple

- Introduced Iseli Nursery, Boring, OR
- Hardy to zone 4b
- Hybrid maple of *Acer pseudosieboldianum* (Korean maple) and *Acer palmatum* (Japanese maple)
- Member of Jack Frost® Series of hybrid maples
- Palmate shaped leaves emerge bright orange-red in spring turning green in summer
- Good branching
- Orange-scarlet fall color



Acer 'IsINW': North Wind® maple



Acer 'IsINW': North Wind® maple



Acer tataricum 'Patdell': Pattern Perfect® Tatarian maple

- Introduced by J. Frank Schmidt and Son Co., Boring, OR
- Hardy to zone 3
- Faster growing
- 25' tall, 20' wide, broadly oval to rounded
- Orange-red fall color
- White flowers in May
- Red, double samaras in summer to fall
- Thick green leaves
- Drought and high soil pH tolerant



***Betula platyphylla* 'Jefpark': Parkland Pillar™ Asian white birch**

- ♦ Introduced by Parkland Nurseries and Jeffries Nurseries, Canada
- ♦ Available in U.S. through Bailey Nurseries, St. Paul, MN
- ♦ Hardy to zone 3b
- ♦ 40' tall and only 6-7' wide, narrow, upright form
- ♦ Golden fall color, showy, white bark
- ♦ Heat tolerant, but can get bronze birch borer when drought stressed



***Carpinus betulus* 'JFS-KW1CB': Emerald Avenue® European hornbeam**

- ♦ Introduced by J. Frank Schmidt & Son Co.
- ♦ Hardy to zone 5a
- ♦ Strong central leader
- ♦ Sturdy branches
- ♦ Easy to grow, vigorous
- ♦ Deep green, corrugated leaves
- ♦ Yellow fall color, smooth gray bark
- ♦ 40' tall and 28' wide, broadly pyramidal to ovate form
- ♦ Heat tolerant



***Magnolia stellata* 'Centennial Blush': First Editions® 'Centennial Blush' star magnolia**

- ♦ Bred by Michael Dirr and offered through Bailey Nurseries
- ♦ Hardy to zone 4b
- ♦ Pink buds open to full, very fragrant, pale pink flowers with lots of tepals
- ♦ Lots of flowers produced annually
- ♦ 12-18' tall and 10-15' wide, upright oval form



***Malus × adstringens* 'Durleo': First Editions® Gladiator™ flowering crabapple**

- ♦ Introduced by Bailey Nurseries
- ♦ Hardy to zone 3b
- ♦ Bright pink flowers in May
- ♦ Small, reddish-purple fruit in summer to fall
- ♦ Bronze-purple leaves
- ♦ 20' tall, 9' wide, upright, narrow form
- ♦ Good disease resistance and drought tolerant



***Parrotia persica* 'JLColumnar': Persian Spire™ parrotia**

- ♦ Discovered by JLPN Nursery and offered through J. Frank Schmidt & Son Co.
- ♦ Hardy to zone 5a
- ♦ 25' tall and only 10' wide, columnar to upright oval form, fine texture
- ♦ Smaller, bright green leaves have purple tinted margins
- ♦ Orange, red, yellow and burgundy fall color
- ♦ Bright red stamens in spring
- ♦ Exfoliating bark when older



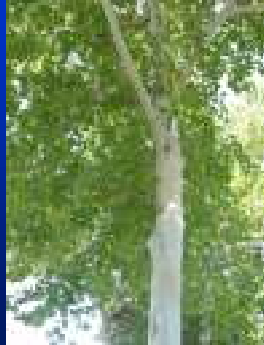
***Parrotia persica* 'JLColumnar': Persian Spire™ parrotia**

- ♦ John Lewis and Persian Spire™ parrotia 14 months after taking a softwood cutting at JLPN



***Platanus occidentalis* 'Grenickel': Silverwood™
American sycamore**

- ♦ Introduced by Garden Debut® and sold by Greenleaf Nursery Co., Park Hill, OK
- ♦ Hardy to zone 4b
- ♦ Fast growing when young, good branching
- ♦ Maintains showy, white bark from top of tree to base of tree
- ♦ 75-100' tall and wide
- ♦ May be susceptible to anthracnose and powdery mildew



***Pyrus* 'NCPX1': Javelin™ pear**

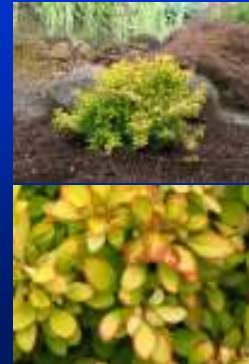
- ♦ Bred by Dr. Tom Ranney at NCSU and released through J. Frank Schmidt & Son Co.
- ♦ Hardy to zone 5 ??
- ♦ Tightest and most columnar pear on market, stays narrow as it matures
- ♦ Reddish-purple new leaves maturing to bronze-green in summer
- ♦ Fireblight resistant
- ♦ 35' tall and only 10' wide
- ♦ White flowers in spring



New Shrubs

***Berberis thunbergii* 'BailErin': First Editions®
Limoncello™ Japanese barberry**

- ♦ Bred by Don Selinger and introduced by Bailey Nurseries
- ♦ Hardy to zone 4a
- ♦ Chartreuse foliage with irregular dotted, red margins
- ♦ Orange, yellow and red fall color
- ♦ 3-4' tall and wide, mounding form
- ♦ Deer resistant



***Buddleia* 'Bosblink': Blaze Pink™ butterfly bush**

- ♦ Released by Ball Ornamentals®
- ♦ Hardy to zone 5b, dieback shrub
- ♦ Purplish-pink, smaller flowers
- ♦ Silvery leaves
- ♦ Blooms summer to fall
- ♦ Attracts hummingbirds and butterflies
- ♦ 4' tall and 6' wide, upright form



***Buddleia* 'Boscrazn': CranRazz™ butterfly bush**

- ♦ Released through Ball Ornamentals®
- ♦ Hardy to zone 5b, dieback shrub
- ♦ Deep cranberry-red flowers in summer to fall in 8" long clusters
- ♦ Reblooms readily
- ♦ 5-6' tall, 4-5' wide
- ♦ Attracts butterflies and hummingbirds
- ♦ Heat tolerant



***Buddleia* 'Bostulu': True Blue™ butterfly bush**

- ◆ Released by Ball Ornamentals®
- ◆ Hardy to zone 5b, dieback shrub
- ◆ Large, blue flowers
- ◆ Silvery-gray leaves
- ◆ Blooms summer to fall
- ◆ Low seed set
- ◆ Attracts hummingbirds and butterflies
- ◆ 4' tall and 6' wide, upright form



***Buddleia* 'Bosyew': Yeti White™ butterfly bush**

- ◆ Released by Ball Ornamentals®
- ◆ Hardy to zone 5b, dieback shrub
- ◆ Wide, white flowers
- ◆ Blooms summer to fall
- ◆ Attracts hummingbirds and butterflies
- ◆ 4' tall and 6' wide, upright form



***Buddleia* 'Blue Chip Jr.': Lo & Behold® 'Blue Chip Jr.' butterfly bush**

- ◆ Bred by Dr. Dennis Werner of NCSU and introduced by Proven Winners® ColorChoice® and Spring Meadow Nursery
- ◆ Hardy to zone 5b, dieback shrub
- ◆ Smaller, compact, mound and less brittle than 'Blue Chip', 20-28" tall and wide
- ◆ Silver-green leaves
- ◆ Non-invasive, seedless
- ◆ Reblooming blue-purple flowers



***Buddleia* 'Pink Micro Chip': Lo & Behold® 'Pink Micro Chip' butterfly bush**

- ◆ Bred by Dr. Dennis Werner of NCSU and introduced by Proven Winners® ColorChoice® and Spring Meadow Nursery
- ◆ Hardy to zone 5b, dieback shrub
- ◆ 1 ½-2' tall and wide
- ◆ Compact, mounded form
- ◆ Non-invasive, seedless
- ◆ Reblooming, medium pink flowers that resemble salvias



***Buxus* 'RLH-BI': Emerald Knoll® boxwood**

- ◆ Introduced by Garden Debut® and sold by Greenleaf Nursery Co., Park Hill, OK
- ◆ Hardy to zone 5a
- ◆ Low, mounding to spreading form
- ◆ Emerald green, broad-leaved evergreen
- ◆ Stays green in winter, does not turn brown
- ◆ 1 ½-2' tall and 3-4' wide
- ◆ Deer resistant



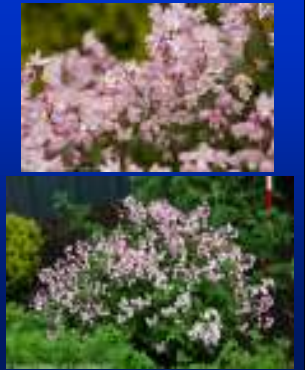
***Corylus americana* 'Purpleleaf Bailey Select': Bailey Select purpleleaf American hazelnut**

- ◆ Introduced by Bailey Nurseries
- ◆ Hardy to zone 3a
- ◆ Purplish-green to dark purple leaves in summer
- ◆ Burgundy fall color
- ◆ Edible nuts in clusters of 2-4 in fall
- ◆ 6-8' tall and wide, rounded form
- ◆ Good for naturalizing
- ◆ Species native to WI



***Deutzia* 'NCDX2': Yuki Cherry Blossom™ deutzia**

- Bred by Dr. Tom Ranney of NCSU and introduced by Proven Winners® ColorChoice® and Spring Meadow Nursery
- Hardy to zone 5b
- Light pink flowers cover the plants in May
- 1-2' tall and wide, mounding
- Burgundy-purple fall color
- Deer resistant



***Deutzia* 'Nikko Blush': 'Nikko Blush' deutzia**

- Bred by the U.S. National Arboretum, Washington, D.C. and released through Monrovia Nursery, Azusa, CA
- Hardy to zone 5b
- Soft pink flowers in spring, darker pink stripe on back of petals
- 3-4' tall, 4-5' wide, compact, mounded form
- Deep burgundy fall color



***Exochorda* × *macrantha* 'Bailmoon': First Editions® Lotus Moon™ pearlbus**

- Introduced by Bailey Nurseries
- Hardy to zone 4b
- White, round, pearl-like buds open to pure white, 5 petaled flowers in early May borne in racemes
- Very floriferous
- 4-5' tall, 3-4' wide, upright, rounded form



***Hibiscus syriacus* 'DS01BS': Blueberry Smoothie™ rose-of-Sharon**

- Introduced by Garden Debut® and sold by Greenleaf Nursery Co., Park Hill, OK
- Hardy to zone 5b
- Double, bluish-purple flowers in late summer
- 8' tall and 4' wide, upright form



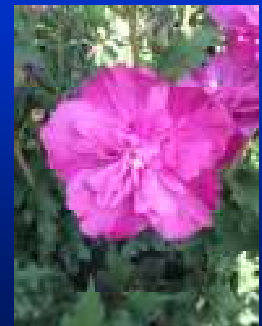
***Hibiscus syriacus* 'DS02SS': Strawberry Smoothie™ rose-of-Sharon**

- Introduced by Garden Debut® and sold by Greenleaf Nursery Co., Park Hill, OK
- Hardy to zone 5b
- Double, light pink flowers in late summer
- 8' tall and 4' wide, upright form



***Hibiscus syriacus* 'DS03RS': Raspberry Smoothie™ rose-of-Sharon**

- Introduced by Garden Debut® and sold by Greenleaf Nursery Co., Park Hill, OK
- Hardy to zone 5b
- Double, fuchsia-raspberry flowers in late summer
- 8' tall and 4' wide, upright form



***Hibiscus syriacus* 'DS04PS': Peppermint Smoothie™ rose-of-Sharon**

- ♦ Introduced by Garden Debut® and sold by Greenleaf Nursery Co., Park Hill, OK
- ♦ Hardy to zone 5b
- ♦ Double, bi-colored flowers of light pink with fuchsia, ruffled edges in late summer
- ♦ 8' tall and 4' wide, upright form



***Hydrangea arborescens* 'Greannie': Lil' Annie™ smooth hydrangea**

- ♦ Introduced by Garden Debut® and sold by Greenleaf Nursery Co., Park Hill, OK
- ♦ Hardy to zone 4a
- ♦ More flowers on thicker stems than species
- ♦ Large, mophead, white flowers from summer, then turn brown in fall
- ♦ 3-4' tall and wide
- ♦ Rounded form, vigorous grower



***Hydrangea arborescens* 'SMNHALR': Lime Rickey™ smooth hydrangea**

- ♦ Spring Meadow Nursery, Grand Haven, MI
- ♦ Hardy to zone 4a
- ♦ Lime-green, large, mophead flowers in summer, eventually turn whitish, then brown in fall
- ♦ 3-4' tall and wide, suckering
- ♦ Great as a cut or dried flower



***Hydrangea macrophylla* 'Grefuglo': Fuchsia Glow™ bigleaf hydrangea**

- ♦ Introduced by Garden Debut® and sold by Greenleaf Nursery Co., Park Hill, OK
- ♦ Hardy to zone 5b
- ♦ Good reblooming hydrangea
- ♦ Bright, fuchsia-pink flowers in summer to fall
- ♦ Vigorous grower
- ♦ 4-6' tall and wide
- ♦ Flowers on old wood, not sure if flowers on new wood too



***Hydrangea macrophylla* 'Lindsey Anne': LA Dreamin'™ bigleaf hydrangea**

- ♦ Introduced by Ball Ornamentals®
- ♦ Hardy to zone 5b
- ♦ Flowers are blue, purple and pink all on the same plant at the same time
- ♦ Reblooms readily on older wood so not sure if it would bloom in WI
- ♦ No soil pH treatment needed
- ♦ 5' tall, 6' wide



***Hydrangea macrophylla* 'Monmar': Enchantress® bigleaf hydrangea**

- ♦ Released through Monrovia Nursery
- ♦ Hardy to zone 5b
- ♦ Blooms on old and new wood, rebloomer
- ♦ Large, mophead pink or blue flowers, depending on soil pH
- ♦ Ruby-black flower stalks contrast nicely with flowers
- ♦ Good cut or dried flower
- ♦ 3-5' tall and wide, rounded form

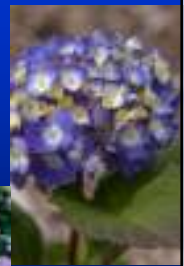


***Hydrangea macrophylla* 'PIIHM-II': Endless Summer® Bloomstruck™ bigleaf hydrangea**

- ♦ Bred by Dr. Michael Dirr and introduced by Bailey Nursery
- ♦ Hardy to zone 5a
- ♦ Reblooming, large, mophead violet-blue to blue flowers in acidic pH soils, rose-pink in higher pH
- ♦ Blooms on old and new wood
- ♦ Reddish-purple stems, petioles and midrib
- ♦ 3-4' tall, 4-5' wide, rounded to spreading form
- ♦ Burgundy-red fall color
- ♦ Heat tolerant, disease resistant



***Hydrangea macrophylla* 'PIIHM-II': Endless Summer® Bloomstruck™ bigleaf hydrangea**



***Hydrangea macrophylla* 'SMHMTAU': Let's Dance® Blue Jangles bigleaf hydrangea**

- ♦ Introduced by Proven Winners® ColorChoice® and Spring Meadow Nursery
- ♦ Hardy to zone 5b
- ♦ Reblooming mophead hydrangea
- ♦ Blooms on old and new wood
- ♦ Pink or blue flowers based on soil pH
- ♦ 2-3' tall and wide, mounded, compact form



***Hydrangea paniculata* 'Bokraflame': Magical® Candle panicle hydrangea**

- ♦ Bred in the Netherlands and introduced through Ball Ornamentals®
- ♦ Hardy to zone 4a
- ♦ Larger, denser, white flowers in summer
- ♦ Stronger stems hold flowers more upright
- ♦ 5-6' tall and wide



***Hydrangea paniculata* 'Grepearlpk': Pearls N' Pink™ panicle hydrangea**

- ♦ Introduced by Garden Debut® and sold by Greenleaf Nursery Co., Park Hill, OK
- ♦ Hardy to zone 4a
- ♦ Compact shrub
- ♦ Bicolored, smaller, white flowers in early summer quickly turn to pinkish-rose
- ♦ 4' tall and 3' wide, rounded form



***Hydrangea paniculata* 'Rensun': First Editions® Strawberry Sundae® panicle hydrangea**

- ♦ Bred in France and introduced into the U.S. by Bailey Nurseries
- ♦ Hardy to zone 4a
- ♦ Compact, smaller version of Vanilla Strawberry®
- ♦ 4-5' tall, 3-4' wide, upright form
- ♦ Large, full, creamy-white flowers in summer later turning pink to strawberry-red



***Hydrangea paniculata* 'SMHPZIND': Pillow Talk™
panicle hydrangea**

- ♦ Offered through Spring Meadow Nursery
- ♦ Hardy to zone 4a
- ♦ Large, pyramidal flower clusters in summer mature to white then blushed at the base with light pink as summer progresses
- ♦ Flowers held upright on sturdy stems
- ♦ 6-8' tall and wide, upright form



***Hydrangea quercifolia* 'Munchkin': 'Munchkin'
oakleaf hydrangea**

- ♦ Bred by U.S. National Arboretum and offered through Spring Meadow Nursery and Bailey Nurseries
- ♦ Hardy to zone 5b
- ♦ Compact, dense, mounded to rounded form
- ♦ 3-4 1/2' tall and wide
- ♦ Large, pyramidal, white flowers in summer gradually turn medium pink
- ♦ Mahogany-red fall color



***Hydrangea quercifolia* 'PIIHQ-1': First Editions®
Jetstream™ oakleaf hydrangea**

- ♦ Bred by Dr. Michael Dirr and released by Bailey Nurseries
- ♦ Hardy to zone 5b
- ♦ Dense, compact, non-flopping habit
- ♦ 5-6' tall, 4-5' wide, rounded, compact form
- ♦ Resistant to leaf spot
- ♦ Large, white flowers on strong stems; ages to dark dusty pink
- ♦ Bright, orange-red fall color
- ♦ Exfoliating bark on stems



***Hypericum* 'PIIHYP-1': First Editions® Cobalt-N-Gold™
St. Johnswort**

- ♦ Bred by Dr. Michael Dirr and introduced through Bailey Nurseries
- ♦ Hardy to zone 4b
- ♦ 2-3' tall, 4-5' wide, compact, mounded form
- ♦ Silver-green leaves
- ♦ Bright yellow flowers in early summer
- ♦ Attracts butterflies
- ♦ Yellow, orange to red fall color
- ♦ Exfoliating bark
- ♦ Deer resistant and drought tolerant



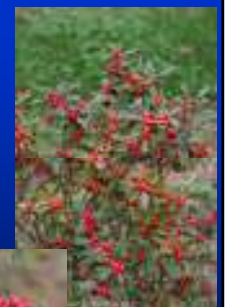
***Ilex x meserveae* 'Gold Princess': Castle Gold™
blue holly or Meserve holly**

- ♦ Developed by Carroll Nurseries and introduced through Proven Winners® ColorChoice® and Spring Meadow Nursery
- ♦ Hardy to zone 5b
- ♦ New growth is bright lime-gold then gold summer through winter
- ♦ Female, produces red fruit, needs male pollinator Castle Wall™
- ♦ Broad-leaved evergreen
- ♦ 5-6' tall and wide, upright



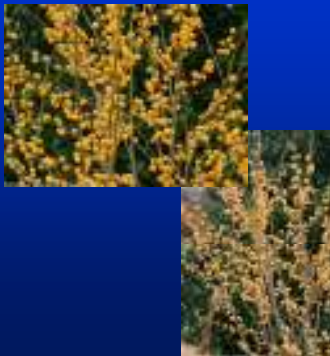
***Ilex verticillata* 'NCIV1': Little Goblin™
winterberry**

- ♦ Bred by Dr. Tom Ranney of NCSU and introduced through Proven Winners® ColorChoice® and Spring Meadow
- ♦ Hardy to zone 3b
- ♦ Large, red fruit on female plants from fall through winter
- ♦ Use Mr. Poppins™ as male pollinator
- ♦ 3-5' tall and wide, smaller than species, mounded form
- ♦ Native to WI



***Ilex verticillata* 'Roberta Case': Berry Heavy®
Gold winterberry**

- Selected by Fred Case of Saginaw, MI and introduced through Proven Winners® ColorChoice® and Spring Meadow Nursery
- Hardy to zone 3b
- Large, bright gold fruit on female plants from fall through winter
- Use Mr. Poppins™ as male pollinator
- 6-9' tall and wide, upright form
- Native to WI



***Lonicera caerulea* 'Blue': Sugar Mountain™ Blue honeysuckle or haskap**

- Bred in the Czech Republic and introduced in the U.S. by Proven Winners® ColorChoice® and Spring Meadow Nursery
- Hardy to zone 2a
- Edible, sweet, blue fruit
- Easy to grow hedge, no special soil pH required, very cold hardy
- Small white flowers in early spring on old wood
- Plant two cultivars for heavier fruit set
- 5-6 ½' tall and wide, mounded form
- Native to WI and deer resistant



***Lonicera caerulea* 'Stimul': Sugar Mountain™ Balalaika™ honeysuckle or haskap**

- Bred in the Czech Republic and introduced in the U.S. by Proven Winners® ColorChoice® and Spring Meadow Nursery
- Hardy to zone 2a
- Edible, sweet, blue, 1" long fruit
- Easy to grow hedge, no special soil pH required, very cold hardy
- Small white flowers in early spring on old wood
- Plant two cultivars for heavier fruit set
- 5-6' tall and wide, mounded form
- Native to WI and deer resistant



***Lonicera caerulea* '54-57': Sugar Mountain™ Polar Bear™ honeysuckle or haskap**

- Bred in the Czech Republic and introduced in the U.S. by Proven Winners® ColorChoice® and Spring Meadow Nursery
- Hardy to zone 2a
- Edible, sweet, blue, 1.5" long fruit
- Easy to grow hedge, no special soil pH required, very cold hardy
- Small white flowers in early spring on old wood
- Plant two cultivars for heavier fruit set, this cultivar is high yielding
- 5-6' tall and wide, mounded form
- Native to WI and deer resistant



***Lonicera caerulea* 'Indigo': Sugar Mountain™ Kalinka™ honeysuckle or haskap**

- Bred in the Czech Republic and introduced in the U.S. by Proven Winners® ColorChoice® and Spring Meadow Nursery
- Hardy to zone 2a
- Edible, sweet, blue, 1" long fruit
- Easy to grow hedge, no special soil pH required, very cold hardy
- Small white flowers in early spring on old wood
- Plant two cultivars for heavier fruit set, this cultivar is high yielding
- 5-6' tall and wide, mounded form
- Native to WI and deer resistant



***Physocarpus opulifolius* 'ARTBOE401': Red Robe™ eastern ninebark**

- Introduced by Spring Meadow Nursery
- Hardy to zone 3a
- Yellow-orange spring leaves age to burgundy-red
- Pinkish-white, late spring flowers
- Red to burgundy fruit in late summer turn brown in fall
- 6-8' tall, 7-9' wide, upright form
- Native to WI



Rhododendron 'LAVJ2011': Handy Man™ Purple rhododendron

- ♦ Bred by Joe Parks and introduced through Proven Winners® ColorChoice® and Spring Meadow Nursery
- ♦ Hardy to zone 4a
- ♦ Rich purple flowers in large trusses in late May
- ♦ Good resistance to Phytophthora root rot
- ♦ Heat tolerant
- ♦ 6-8' tall and wide, mounded form



Rosa 'Balleels': Easy Elegance® Head Over Heels rose

- ♦ Introduced by Bailey Nurseries
- ♦ Hardy to zone 4b
- ♦ Full, fluffy, double, light pink, 2" wide flowers
- ♦ Lavender color as temps. decrease in fall
- ♦ Recurrent bloomer
- ♦ Dark green, glossy leaves
- ♦ 3' tall and 2 ½' wide, upright form
- ♦ Supposedly disease resistant



Rosa 'CA 29-2013': First Editions® Campfire rose

- ♦ Offered as part of the Canadian Artist Rose Series and introduced into the U.S. through Bailey Nurseries
- ♦ Hardy to zone 3b
- ♦ Bright, glossy green leaves
- ♦ Yellow buds with red tones opening to semi-double, yellow flowers edged in deep rosy pink as flowers mature
- ♦ Disease resistant
- ♦ Fewer thorns
- ♦ 3' tall and wide, upright to rounded form



Rosa 'Meickinava': Look-A-Likes® Bougainfeelya rose

- ♦ Bred by Meilland International in France and introduced into the U.S. by Star® Roses and Plants, West Grove, PA
- ♦ Hardy to zone 5
- ♦ Cup-like, single, deep red flowers all summer that resemble bougainvillea flowers
- ♦ Produces red hips in fall
- ♦ Good disease resistance
- ♦ 4' tall, 3 ½' wide, bushy form
- ♦ Dark green, glossy leaves



Rosa 'Radtreasure': Tahitian Treasure™ rose

- ♦ Bred by Bill Radler of Milwaukee, WI and introduced by Star® Roses and Plants
- ♦ Hardy to zone 5
- ♦ Cup-like, double, salmon-pink to red flowers, reblooms readily
- ♦ 5-5 ½' tall, 3' wide, bushy, upright form
- ♦ Good disease resistance
- ♦ Dark green, semi-glossy leaves



Rosa 'Meipeporia': Oso Easy® Double Red rose

- ♦ Introduced through Proven Winners® ColorChoice® and Spring Meadow Nursery
- ♦ Hardy to zone 5a
- ♦ Bright red, double flowers with pinkish-orange undertones
- ♦ Blooms all summer
- ♦ Seedling from Double Knock Out®
- ♦ 3-4' tall and wide, rounded form
- ♦ Excellent disease resistance



***Sambucus racemosa* 'SMNSRD4': Lemon Lace™
European red elderberry**

- Introduced through Proven Winners® ColorChoice® and Spring Meadow Nursery
- Hardy to zone 4a
- Bright gold new growth, deeply divided leaves, some red in new growth, leaves fade to yellow green in summer
- Compact, irregular mound, fine texture
- 3-5' tall and wide
- Creamy-white spring flowers, red fruit in summer
- Red to scarlet fruit in summer



***Spiraea media* 'SMSMDPBK': Double Play® Blue
Kazoo™ Russian spirea**

- Introduced through Proven Winners® ColorChoice® and Spring Meadow Nursery
- Hardy to zone 4a
- Cool blue leaves with burgundy hints in new growth
- Large, white flowers in late spring
- Reddish fall color
- 2-3' tall and wide, mounded form
- Deer resistant plant



***Spiraea japonica* 'Greredlac': Red Lace™
Japanese spirea**

- Introduced by Garden Debut® and sold by Greenleaf Nursery Co., Park Hill, OK
- Sold as *Spiraea* × *bumalda*, which is incorrect nomenclature
- Hardy to zone 4a
- Dense form
- Deep pinkish-red flowers
- Blue-green leaves
- 2-3' tall, 4-5' wide, upright form



***Symphoricarpos* × *doorenbosii* 'Kolmgala': First
Editions® Galaxy™ snowberry**

- Bred in The Netherlands and offered in the U.S. by Plants Nouveau, Charleston, SC and sold by Bailey Nurseries
- Hardy to zone 4
- Small, white flowers in spring followed by large, white berries in fall to early winter
- 2 ½-3' tall and wide, upright, rounded form
- Best in full sun as fruit may be susceptible to black fungal growth



***Symphoricarpos* × *doorenbosii* 'Kolmava':
Magical® Avalanche™ snowberry**

- Bred in The Netherlands and offered in the U.S. by Plants Nouveau, Charleston, SC and sold by Ball Ornamentals®
- Part of HGTV Home Selection
- Hardy to zone 4
- 2 ½-3' tall and 3' wide
- Low growing
- Larger, snow-white fruit in fall to early winter
- Best in full sun as fruit may be susceptible to black fungal growth



***Symphoricarpos* × *doorenbosii* 'Kolmajo':
Magical® Joy™ snowberry**

- Bred in The Netherlands and offered in the U.S. by Plants Nouveau and sold by Ball Ornamentals®
- Part of HGTV Home Selection
- Hardy to zone 4
- 2 ½-3' tall and 3' wide
- Low growing
- White fruit with rose-pink blush
- May be susceptible to black fungus on fruit and powdery mildew



***Symphoricarpos* × *doorenbosii* 'Kolmaman':
Magical® Mandy™ snowberry**

- ♦ Bred in The Netherlands and offered in the U.S. by Plants Nouveau and sold by Ball Ornamentals®
- ♦ Part of HGTV Home Selection
- ♦ Hardy to zone 4
- ♦ 2 ½-3' tall and 3' wide
- ♦ Low growing
- ♦ White fruit with pink blush
- ♦ May be susceptible to black fungus on fruit and powdery mildew



***Vitex agnus-castus* 'SMVACBD': Blue Diddley™
chastetree**

- ♦ Introduced through Proven Winners®, ColorChoice® and Spring Meadow Nursery
- ♦ Hardy to zone 5b, dieback shrub
- ♦ Dwarf, compact, 4-6' tall and wide, mounded form
- ♦ Lavender-blue, spikey flowers in late summer to fall
- ♦ Heat tolerant and pest resistant



***Weigela* 'Bokracupur': Magical® Pink weigela**

- ♦ Bred in The Netherlands and introduced into the U.S. by Ball Ornamentals®
- ♦ Hardy to zone 5a
- ♦ Reblooming, bright dark pink flowers
- ♦ Dark green leaves
- ♦ 4-5' tall and wide, upright form
- ♦ Part of the HGTV Home Selection



***Weigela* 'Bokrarob': Magical® Robin weigela**

- ♦ Bred in The Netherlands and introduced into the U.S. by Ball Ornamentals®
- ♦ Hardy to zone 5a
- ♦ Reblooming, deep red flowers
- ♦ Dark green leaves
- ♦ 3' tall and wide, upright form, compact



***Weigela* 'Bokracuwhi': Magical® White weigela**

- ♦ Bred in The Netherlands and introduced into the U.S. by Ball Ornamentals®
- ♦ Hardy to zone 5a
- ♦ Reblooming, creamy-white flowers
- ♦ Dark green leaves
- ♦ 4-5' tall and wide, upright form
- ♦ Part of the HGTV Home Selection



***Weigela* 'NovawEIFUS': Ruby Fusion™ weigela**

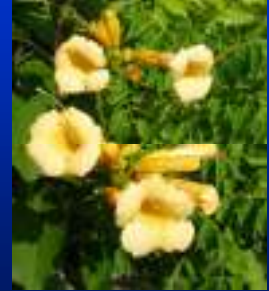
- ♦ Bred by NovaFlora®, LLC and introduced by Star® Roses and Plants, West Grove, PA
- ♦ Hardy to zone 5b
- ♦ Half the size of 'Rubidor', 3-4' tall and wide
- ♦ Bushy, compact, rounded form
- ♦ Golden yellow leaves with wavy margins edged in red, does not burn in sun
- ♦ Tubular, red flowers in June



New Vines and Groundcovers

Campsis radicans 'Gresnbr': Snazzy Brass™ trumpet creeper

- ♦ Introduced by Garden Debut® and sold by Greenleaf Nursery Co., Park Hill, OK
- ♦ Hardy to zone 4b
- ♦ Vigorous, climbing vine
- ♦ Golden-yellow, trumpet-shaped flowers in late summer to early fall
- ♦ 25-30' tall when supported
- ♦ Attracts hummingbirds



Clematis 'Diamond Ball': 'Diamond Ball' clematis

- ♦ Introduced through Proven Winners® ColorChoice® and Spring Meadow Nursery, Grand Haven, MI
- ♦ Hardy to zone 4a
- ♦ Cool white-blue flowers are round to semi-spherical, 4-5" in diameter
- ♦ Flowers on old and new wood from June to Aug.
- ♦ 5-6' tall, 2-3' wide twining vine



Clematis 'Evipo027': Boulevard® Abilene™ clematis

- ♦ Bred by Ray Evison of England and introduced to the U.S. through Bailey Nurseries
- ♦ Hardy to zone 4b
- ♦ Deep pink flowers with darker pink stripe, ruffled edges, and yellow anthers
- ♦ Flowers early summer and again in late summer
- ♦ Only 3-4' tall, compact habit, twining vine, use in containers on a patio



Clematis 'Evipo056': Boulevard® Alaina clematis

- ♦ Bred by Ray Evison of England and introduced to the U.S. through Bailey Nurseries
- ♦ Hardy to zone 4b
- ♦ Deep creamy-pink flowers with central dark pink stripe and yellow anthers
- ♦ Flowers early summer and again in late summer
- ♦ Only 4-5' tall, compact habit, twining vine, use in containers on a patio



Clematis 'Evipo100(N)': Boulevard® Chelsea™ clematis

- ♦ Bred by Ray Evison of England and introduced to the U.S. through Bailey Nurseries
- ♦ Hardy to zone 4b
- ♦ White, ruffled flowers with a slight pink blush, bright yellow stamens
- ♦ Flowers early summer through late summer
- ♦ Only 3-4' tall, compact habit, twining vine, use in containers on a patio



Clematis 'Evipo073': Boulevard® The Countess of Wessex clematis

- Bred by Ray Evison of England and introduced to the U.S. through Bailey Nurseries
- Hardy to zone 4b
- Pale pink flowers with darker pink stripe, frilly margins and deep red to purple anthers
- Flowers early summer through late summer
- Only 4-6' tall, compact habit, twining vine, use in containers on a patio



Clematis 'Evipo051(N)': Boulevard® Giselle™ clematis

- Bred by Ray Evison of England and introduced to the U.S. through Bailey Nurseries
- Hardy to zone 4b
- Deep pink flowers fade to pale pink with purplish-pink stamens
- Flowers early summer through late summer
- Only 3-4' tall, compact habit, twining vine, use in containers on a patio



Clematis 'Evipo062': Boulevard® Zara clematis

- Bred by Ray Evison of England and introduced to the U.S. through Bailey Nurseries
- Hardy to zone 4b
- Large pale blue flowers, yellow anthers
- Flowers early summer through late summer
- Only 4-6' tall, compact habit, twining vine, use in containers on a patio



Clematis 'Evipo011': Empress™ clematis

- Bred by Ray Evison of England and introduced to the U.S. through Bailey Nurseries
- Hardy to zone 4b
- Pink outer sepals are frilly, pompom-like on top of recurved, pink petals with central, dark pink stripe
- Flowers early summer and again in late summer
- 6' tall, compact habit, twining vine



Clematis 'Evipo037': Kingfisher™ clematis

- Bred by Ray Evison of England and introduced to the U.S. through Bailey Nurseries
- Hardy to zone 3b
- Very large, 6-7" wide, lilac-blue flowers, creamy-yellow anthers
- Flowers early summer and again in late summer with smaller flowers
- 8-10' tall, twining vine



Clematis 'Krakowiak': Pink Mink™ clematis

- Bred by Szczepan Marczyński of Poland and introduced into the U.S. by Proven Winners® ColorChoice® and Spring Meadow Nursery
- Hardy to zone 4a
- Dark pink flowers with a darker central stripe on each sepal, profuse bloomer from early summer to early fall
- 9-10' tall, 6-6 ½' wide, twining vine



***Parthenocissus quinquefolia* 'Yellow Wall':
'Yellow Wall' Virginia creeper**

- Bred by Szczepan Marczyński of Poland and introduced to the U.S. by Proven Winners® ColorChoice® and Spring Meadow Nursery
- Hardy to zone 3b
- 20-30' tall, 10' wide, climbing vine
- Bright gold fall color instead of red or purple
- Native to WI, salt tolerant
- Looks good planted next to Red Wall® Virginia creeper



***Vinca minor* 'DSNH 1205': Silver & Gold™
periwinkle**

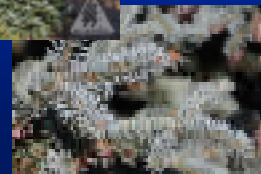
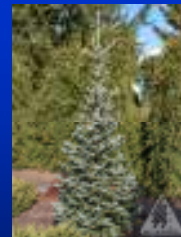
- Introduced by Garden Debut® and sold by Greenleaf Nursery Co., Park Hill, OK
- Hardy to zone 5a
- Variegated green and gold, evergreen leaves
- Silvery-white flowers in early spring
- 6-12" tall and 3' wide
- Slower growing than species
- Groundcover, does not climb



New Evergreens

***Abies balsamea* 'Tyler Blue': 'Tyler Blue' balsam fir**

- Introduced by Iseli Nursery, Boring, OR
- Hardy to zone 3a
- Large, broad, pyramidal to upright, compact form
- Showy, blue, soft needles
- Upright, purplish cones turn brown and shatter directly on tree so no cone litter
- Species native to WI



***Abies koreana* 'Blauer Eskimo': 'Blauer Eskimo'
Korean fir**

- Introduced by Iseli Nursery
- Hardy to zone 4b
- From a witch's broom found in Germany on species
- Gray-green, soft, flat needles
- Uniform, tight, globular shape
- Miniature plant, good for rock gardens



***Chamaecyparis pisifera* 'Blue Moon': 'Blue Moon'
threadleaf falsecypress**

- Introduced by Iseli Nursery
- Hardy to zone 4b
- Sport of 'Baby Blue'
- Bright, steel-blue, soft, juvenile foliage
- Short, stiff branching
- Tight, stiff, globular, dwarf conifer
- Minimal shearing required to maintain form



***Juniperus horizontalis* 'Pancake': 'Pancake' creeping juniper**

- Introduced by Iseli Nursery
- Hardy to zone 3a
- Dwarf, very prostrate (flat), spreading groundcover
- Soft, feathery, gray-blue, scale-like foliage hugs the ground
- Only 4" tall
- Turns purple in winter
- Drought and salt tolerant
- May be susceptible to Phomopsis tip blight



***Juniperus* × *pfitzeriana* 'Golden Joy': 'Golden Joy' juniper**

- Selected by Wiel Linssen of Holland and introduced into the U.S. by Iseli Nursery
- Hardy to zone 4a
- Brighter yellow, scale-like foliage throughout the year, not just in spring
- Does not turn purple or brown in winter
- Spreading, compact, dwarf conifer
- Slower growing
- 2' tall and 3' wide



***Juniperus virginiana* 'Gregarium': 'Grey Guardian'™ eastern red-cedar**

- Introduced by Garden Debut® and sold by Greenleaf Nursery Co., Park Hill, OK
- Hardy to zone 4a
- Grayish-blue foliage
- Low spreading form
- 2-3' tall and 3-5' wide
- Tighter growth form and better color than 'Grey Owl' juniper
- Unsure if turns brown or purple in winter



***Picea abies* 'Mikulasovice': 'Mikulasovice' Norway spruce**

- Introduced by Iseli Nursery
- Hardy to zone 3a
- Broad, upright to irregular, dwarf conifer
- Longer, thicker, green needles
- Requires no pruning
- Good for small spaces



***Picea glauca* 'The Limey': 'The Limey' white spruce**

- From Memorial University of Newfoundland Botanical Gardens in Canada and introduced into the U.S. by Iseli Nursery
- Hardy to zone 2b
- Broad, upright, intermediate sized conifer
- New growth in spring is bright lime-green followed by two-toned short needles turning yellow on top, undersides green
- Species native to WI
- Fast grower, open when young, fills in with age



***Picea meyeri*: Meyer spruce**

- Not a new plant but is now offered in 2014 by Bailey Nurseries
- Hardy to zone 4a
- 40' tall, 30' wide, pyramidal form, dense
- Blue-green, sharp, short needles
- Moderate growth rate
- Urban and drought tolerant
- More disease resistant than Colorado blue spruce



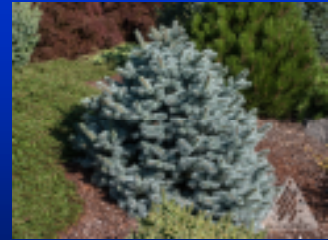
***Picea pungens* 'Avatar': 'Avatar' Colorado blue spruce**

- ♦ Introduced by Iseli Nursery, seedling from 'Moerheim'
- ♦ Hardy to zone 3a
- ♦ Broad, upright, large tree
- ♦ Bright powder-blue, sharp needles
- ♦ Tiered branching
- ♦ Slower growth rate



***Picea pungens* 'Zafiro': 'Zafiro' Colorado blue spruce**

- ♦ Introduced by Iseli Nursery
- ♦ Hardy to zone 3a
- ♦ Broad, upright to rounded, dwarf conifer
- ♦ Powder-blue, sharp needles
- ♦ Slow growth rate



***Pinus heldreichii* 'Malink': 'Malink' Bosnian pine**

- ♦ Introduced by Iseli Nursery
- ♦ Former name was *Pinus leucodermis*
- ♦ Hardy to zone 5a
- ♦ Broad, upright, intermediate sized tree
- ♦ Very dense, full, uniform growth
- ♦ Dark green, sharp needles
- ♦ Pest resistant
- ♦ Drought tolerant



***Pinus parviflora* 'Blauer Engel': 'Blauer Engel' Japanese white pine**

- ♦ Introduced by Iseli Nursery
- ♦ Hardy to zone 5a
- ♦ Broad, upright, intermediate sized tree
- ♦ Lighter blue, two-toned with white, longer and slightly curved needles cover branches
- ♦ Fuller and fluffier look compared to other cultivars of species
- ♦ Salt tolerant



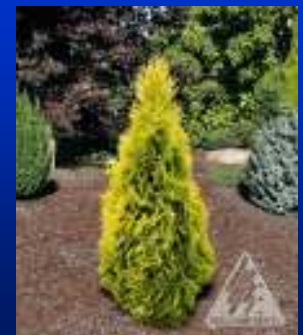
***Sciadopitys verticillata* 'Grüne Kugel': 'Grüne Kugel' Japanese umbrella-pine**

- ♦ Selected in Germany and introduced to the U.S. by Iseli Nursery
- ♦ Hardy to zone 5a
- ♦ Compact, good branching
- ♦ Dwarf conifer
- ♦ Rounded when young developing slowly into small, broad, upright, compact tree
- ♦ Glossy, deep green needles



***Thuja occidentalis* 'Jantar': 'Jantar' arborvitae**

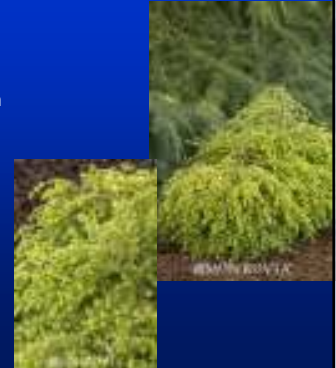
- ♦ Selected by Jakub Jablonski of Poland through Breederplants, sold by Iseli Nursery
- ♦ Hardy to zone 4a
- ♦ Narrow, upright, intermediate sized shrub
- ♦ Bright yellow, aromatic foliage in summer
- ♦ Turns amber during winter
- ♦ Same growth as Emerald arborvitae



***Thuja occidentalis* 'Jantar': 'Jantar' arborvitae**

***Tsuga canadensis* 'MonKinn': Golden Duchess™ eastern hemlock**

- ♦ Introduced through Monrovia Nurseries
- ♦ Hardy to zone 3b
- ♦ Golden yellow leaves on arching branches
- ♦ Dwarf conifer, low mounding form
- ♦ 3-4' tall and 3-5' wide
- ♦ Improved sun tolerance over other gold leaved cultivars
- ♦ Does require afternoon shade



***Tsuga diversifolia* 'Minikin': 'Minikin' northern Japanese hemlock**

- ♦ Introduced to the U.S. by Iseli Nursery
- ♦ Hardy to zone 5a
- ♦ Dwarf conifer, globe-shaped
- ♦ Upright, reddish-brown shoots covered in blunt-tipped, soft needles with silver-white undersides
- ♦ Likes cool, moist, partial shade conditions

